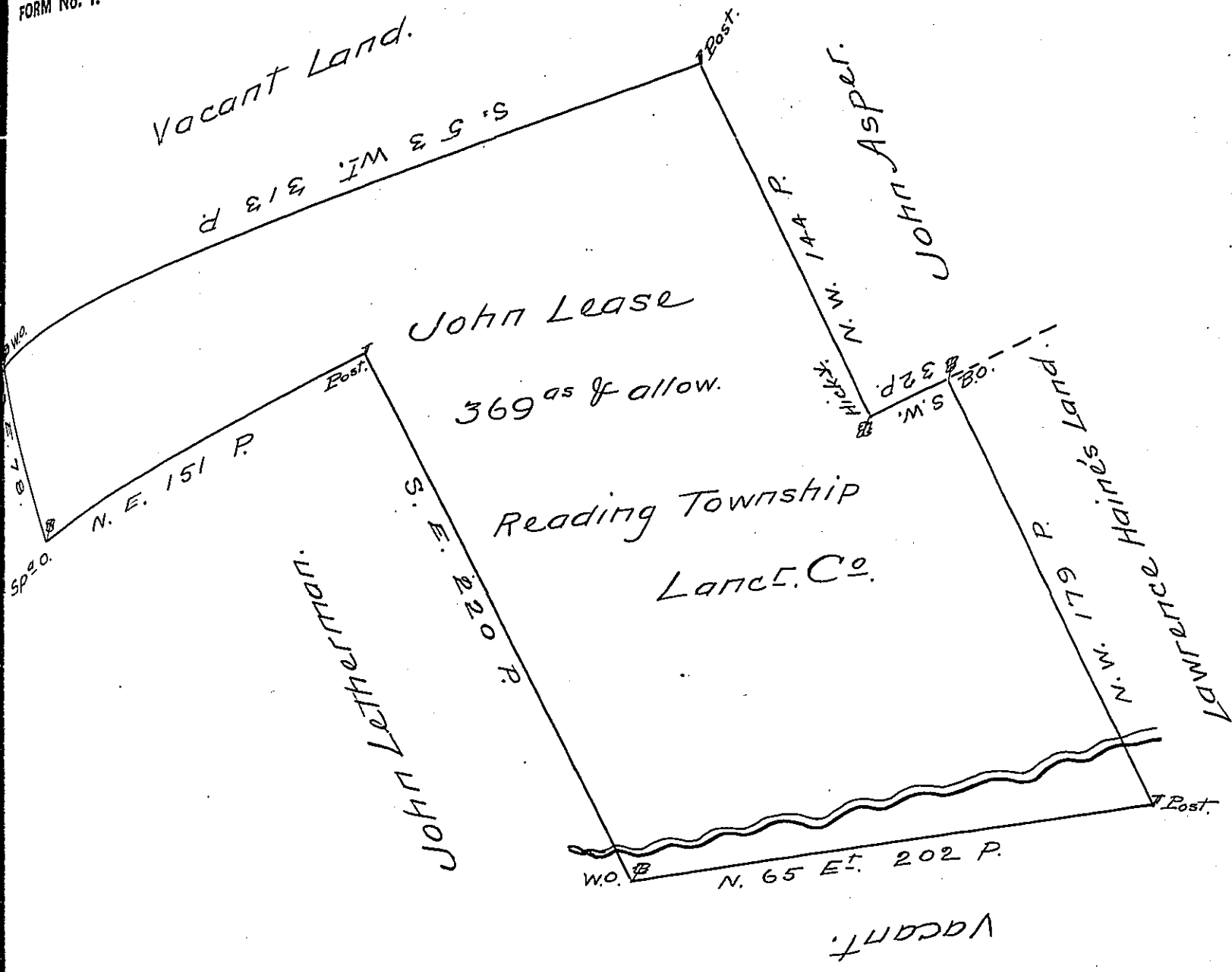


FORM No. 1.



A Draught of John Lease's Land situate on a branch of Bermuddian Creek on the West side Susquehanna in Reding Townp. in the County of Lanc. Containing three hundred & sixty nine acres & the usuall all by virtue of two Warrants from the Honble Prop^{rs} the former bearing date the 1st Febr'y 1742 & the other the 8th October 1743 Surveyed the 19th day of the last mentioned Month

To Mr. William Parsons Sur. Genl. } J. Tho. Cookson D.S.

IN TESTIMONY that the above is a copy of the original remaining on file in the Department of Internal Affairs of Pennsylvania, made conformably to an Act of Assembly approved the 16th day of February, 1833, I have hereunto set my Hand and caused the Seal of said Department to be affixed at Harrisburg, this fourth day of August 1905.

George A. Rosser
Secretary of Internal Affairs.